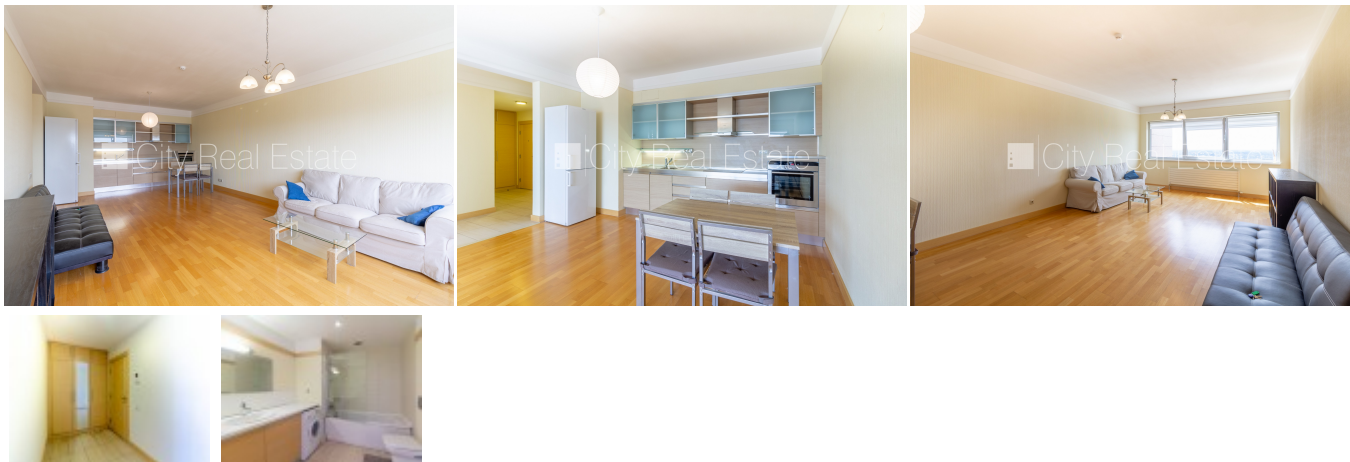


## Apartment for rent in Riga, Sampeteris-Pleskodale, Lielirbes street



Project - Panorama Plaza, newly constructed building , parking for extra charge, underground parking place, in a courtyard is available playground , elevator, studio type apartment, high ceiling , central heating system, heating counters, independent calculation for heating, full decoration, heating floor in bathroom , aluminum glass windows, new plumbing, parquet flooring, flag flooring, bathroom with WC, bath, built in kitchen unit, built-in wardrobe, sofa, bed, kitchen table, chairs, refrigerator, dishwasher, oven, steam sip-off machine, washing machine, extra room for miscellaneous things storage such as bicycle storage, baby carriage etc., day and night television surveillance , video door phone, twenty-four hours security, available, by signing rental agreement you have to pay for the first rent month as well as you have to pay guaranty deposit which is equal one month rent payment, CITY REAL ESTATE ID - 427769

ID:	<b>427769</b>
Type:	Apartment
Subtype:	New Project
Price:	650.00 EUR
Price m2:	9.56 EUR
Area:	68.00 m <sup>2</sup>
Rooms:	2
Floor:	20 from 30
Renovation:	full
Comfort:	full
Furniture:	partial

### Contacts:

Arina Umpiroviča, +371 29821409, [arina@cityreal.lv](mailto:arina@cityreal.lv)