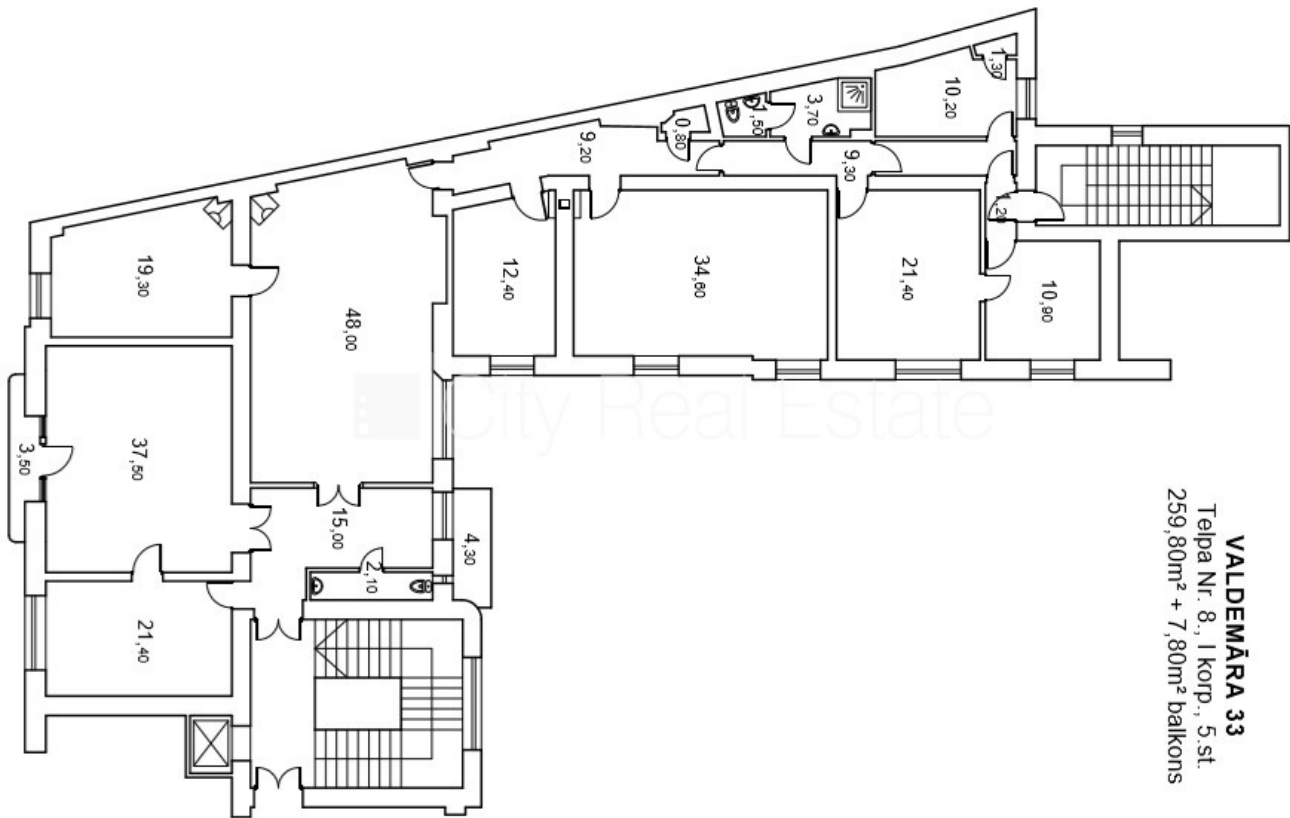


Commercial premises for lease in Riga, Riga center, Krisjana Valdemara street



VALDEMĀRA 33
 Telpa Nr. 8., 1 korp., 5. st.
 259,80m² + 7,80m² balkons

Front building, renovated building, well-maintained greened courtyard, cobbled driveway, indoor courtyard, territory entrance gates with automatic opening and closing system, territory under protection, elevator, balcony 7,8 m², wide view from the window, rooms isolated 2 piece/es, high ceiling, changed radiators, central heating system, full decoration, painted walls, changed plumbing, parquet flooring, new wirework, changed sewerage system, bathroom and WC separated, office furniture, optical internet, alarm system, day and night television surveillance, smart card entrance system, available, till park 200 m, strategically beneficial location, till Old Riga 450 m, by signing rental agreement you have to pay for the first rent month as well as you have to pay guaranty deposit, CITY REAL ESTATE ID - 425998

ID:	425998
Type:	Commercial premises
Subtype:	Office premises
Price:	2592.00 EUR
Price m ² :	9.98 EUR
Area:	259.80 m ²
Rooms:	7
Floor:	5 from 5
Renovation:	full
Comfort:	full
Furniture:	partial

Contacts:

Edgars, +371 27065516, edgars@cityreal.lv