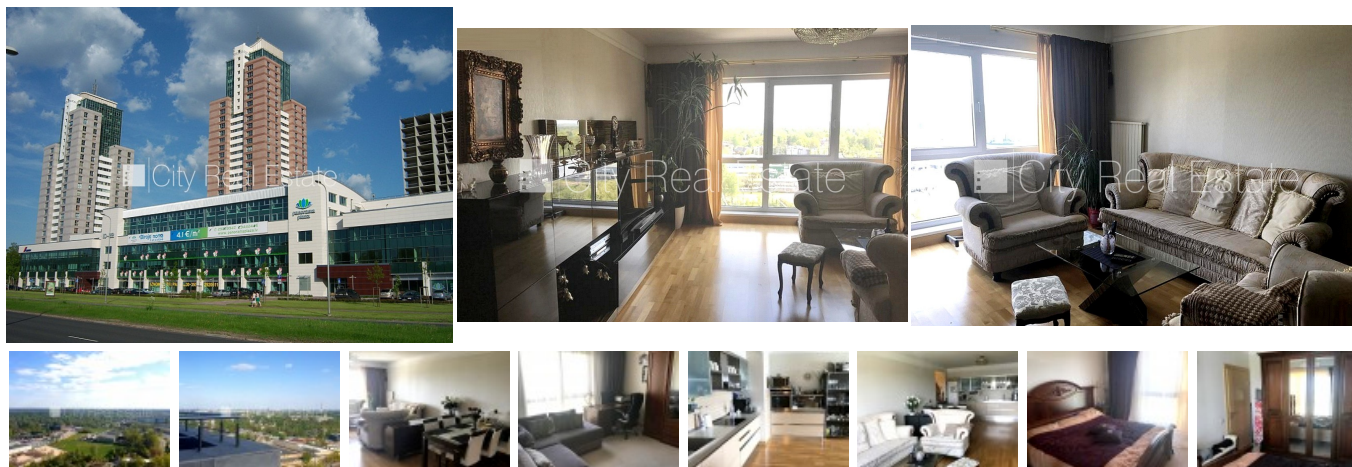


Apartment for sale in Riga, Sampeteris-Pleskodale, Lielirbes street



Project - Panorama Plaza, land is owned, newly constructed building, monolithic concrete walls, facade made from ornamental plastering, well-maintained greened plot of land, cobbled driveway, territory entrance gates with automatic opening and closing system, underground parking place, protected parking place, territory under protection, entrance from courtyard, greened area with new trees, is available cargo elevator, elevator, windows are located on both sides of the building, bedrooms 2 piece/es, rooms isolated 2 piece/es, studio type apartment, high ceiling, radiators with regulators, central heating system, full decoration, large show-windows, new wallpapers, painted walls, new plumbing, oaken wooden flooring, parquet flooring, new wirework, two bathrooms, bath, shower stall, bidet, built-in kitchen unit, built-in wardrobe, pullout corner sofa, double bed, table, chairs, reclining chairs, three-seat reclining chair, wardrobe, buffet, chest of drawers, refrigerator, dishwasher, electric range, oven, washing machine, optical internet, alarm system, day and night television surveillance, video door phone, twenty-four hours security, locked staircase, available, registered in Land Register, strategically beneficial location, we help you to get a loan to buy this real estate, you do not have to pay for brokerage, will help to get Residence permit in Latvia, CITY REAL ESTATE ID - 425950

ID:	425950
Type:	Apartment
Subtype:	New Project
Price:	229500.00 EUR
Price m2:	2467.74 EUR
Area:	93.00 m ²
Rooms:	3
Floor:	13 from 30
Renovation:	cosmetics
Comfort:	full
Furniture:	full

Contacts:

Dainars Bernics, +371 24606438, dainars@cityreal.lv